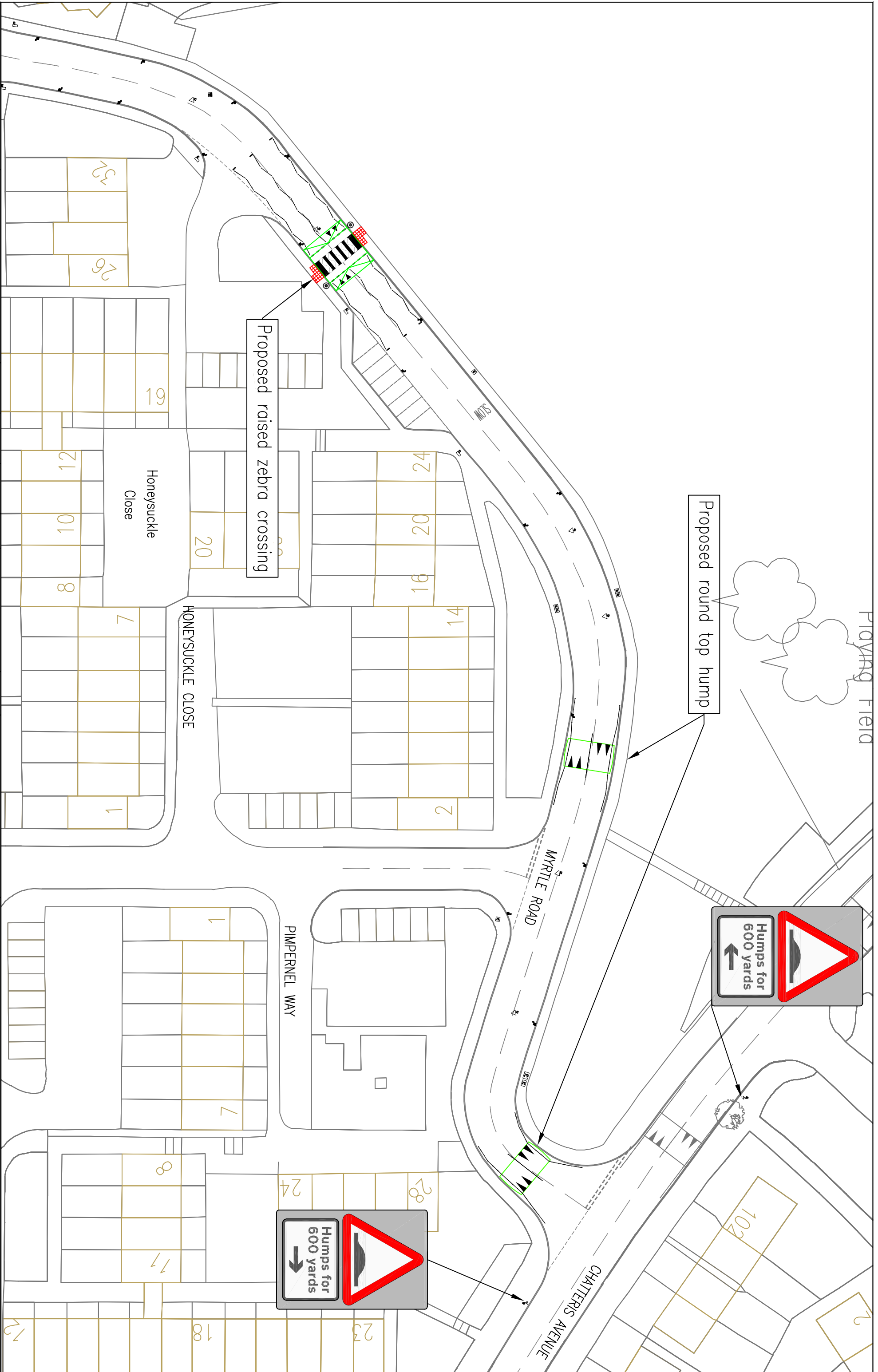


| | | |
|-----------------------------|---------------------|--------------------|
| DRAWN BY RP | CHECKED BY | APPROVED BY |
| DATE: 06.06.12 | SCALE: 1:500 | |
| PURPOSE: Proposal | REVISION: A | |
| DWG No: Q1018-MR-103 | REVISION | AMENDMENT |
| | | DATE |

©COPYRIGHT
 This drawing belongs to Streetcare Culture & Community, Traffic & Engineering Section. Neither the whole nor any part thereof may be reproduced without prior written permission.
 Based upon Ordnance Survey Mapping with the permission of the Controller of Her Majesty's Stationery Office © Crown copyright. Unauthorised reproduction infringes Crown copyright and may lead to prosecution or civil proceedings. London Borough of Haivering, 100024237



Proposed raised zebra crossing

Proposed round top hump

